



# TECHNICAL SPECIFICATION

ODF



## 1. Product Description

Patch Panel, GPF01-24ZR, with 3 pcs duplex LC/APC adapters and 6 pcs pigtails.

Patch Panel, GPF01-24ZR, with 6 pcs duplex LC/APC adapters and 12 pcs pigtails.

Patch Panel, GPF01-48ZR, with 12 pcs duplex LC/APC adapters and 24 pcs pigtails.

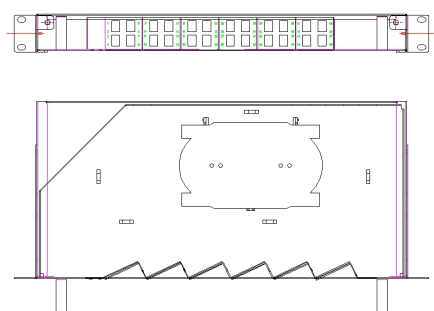
Patch Panel, GPF01-48ZR, with 24 pcs duplex LC/APC adapters and 48 pcs pigtails.

Patch Panel, GPF01-24ZR, with 6 pcs duplex LC/UPC adapters and 12 pcs pigtails.

Patch Panel, GPF01-48ZR, with 12 pcs duplex LC/UPC adapters and 24 pcs pigtails.

Patch Panel, GPF01-48ZR, with 24 pcs duplex LC/UPC adapters and 48 pcs pigtails.

### 1.1 General Properties:



**Note: the picture provides a reference only!**

### 1.2 Application

- This product is applied to joint the optical cable and pigtails. It can realize the functions of optical fiber's welding, storage and line dispatching, etc. It is used for network cabinet.

### 1.3 Characteristics

- Mounted in 19" rack, terminal boxes. Easy to install and unload, sliding out design.
- The body made of cold-rolled steel.
- The fiber is protected with heat shrink tube.
- Can provide enough space for optical fiber cable termination and reminding fiber.
- Can install all kinds of adapters by customer's request.
- Product Measure: 483mm (W) X200mm (D) X 44mm (H).

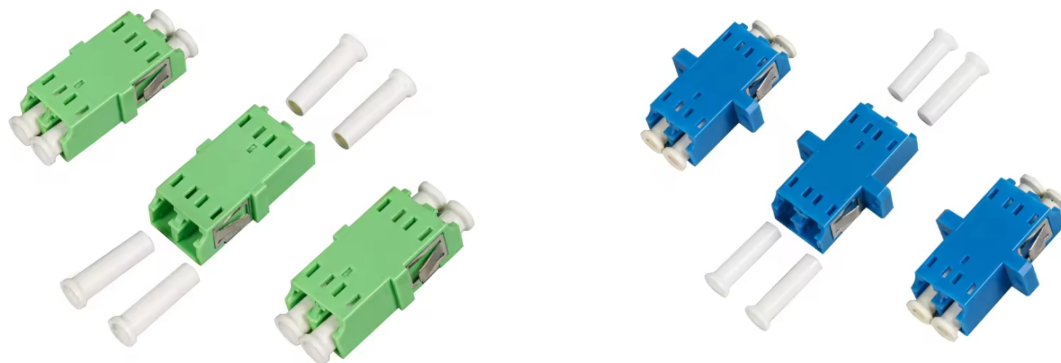
Note: The nominal size may vary by  $\pm 5$ mm.

### 1.4 Ordering information

- Indicate the type of adapter.
- Indicate the number of optic fiber cable installing.
- Indicate the number of optic fiber splicing

### 1.5 SM, duplex Adapter LC/APC

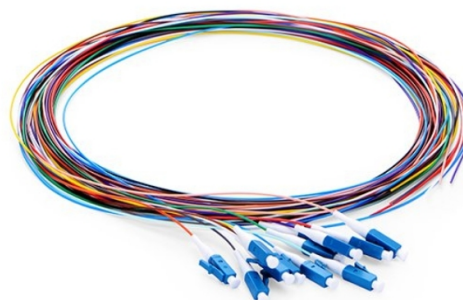
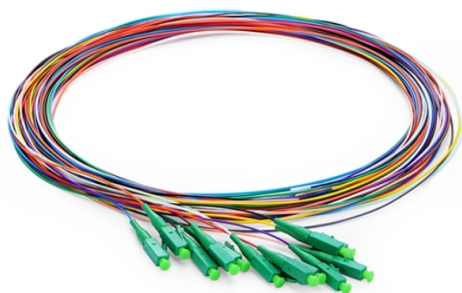
### SM, duplex Adapter LC/UPC



Note: the picture provides a reference only!

### 1.6 Tight Buffer Pigtail, LC/APC, OD:0.9±0.05mm, length 2m, G652D fiber, LSZH sheath.

### Tight Buffer Pigtail, LC/UPC, OD:0.9±0.05mm, length 2m, G652D fiber, LSZH sheath.



Technical characteristics for connector:

Technical data		
Fiber type	SM	
Connector type	LC	
Grinding type	UPC	APC
Insertion loss(dB)	≤0.3	
Return loss(dB)	≥50(typical 55dB)	≥60(typical 65dB)
Operation temperature(°C)	-25 °C to +70 °C	
Durability	> 500 times	
Standard	IEC61754-20	